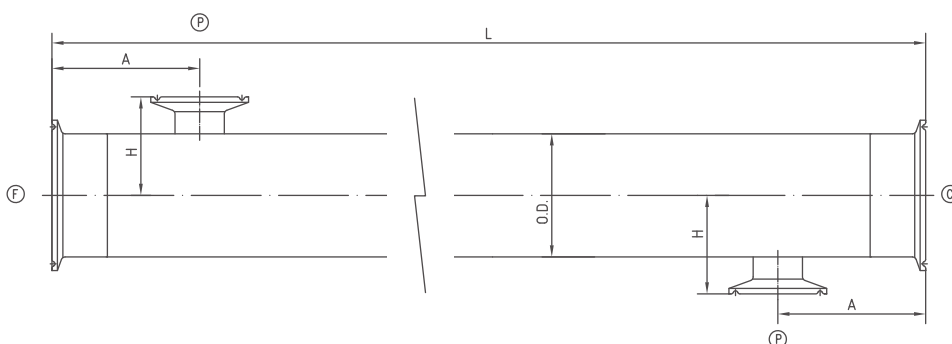


KEYSINO 凯鑫

MetaSep™
Stainless Steel
Membrane Module
不锈钢膜组
KSS-2.5-750A-10P



- Ⓛ 总长 = 3175 mm ⓄD 膜组外径 = 63.5 mm Ⓐ 管口定位 = 76.2 mm Ⓜ 外伸 = 50.8 mm
ⓕ Ⓢ 料液进口/出口: 2.5" Ⓟ 滤液出口: 1"



最大工作压力: 10.3 bar

工作温度: 0 - 149 °C *1

壳体材质: 316L

膜管材质: 316L+TiOx

膜管数量及规格: No.4 x 3/4 吋

膜孔径: 0.5/0.1/0.02 μm

膜面积: 0.7m²

管程数: 1

管口连接方式: 卡箍接头+卡箍垫圈+卡箍 (尺寸见附件)

管口连接尺寸标准: ASME-BPE

供货范围: 见图 *2

安装方式: 立式/卧式

表面处理: 机械抛光(亮光)

PH值范围: 0 - 14

*1: 超过工作温度使用, 需卖方确认。

*2: 如有需要, 卖方可提供附件配件。



上海市浦东新区新金桥路1888号6幢5层
5F, No.6 Building, 1888 Xinqinqiao Rd. Shanghai 201206, China
www.keysino.cn

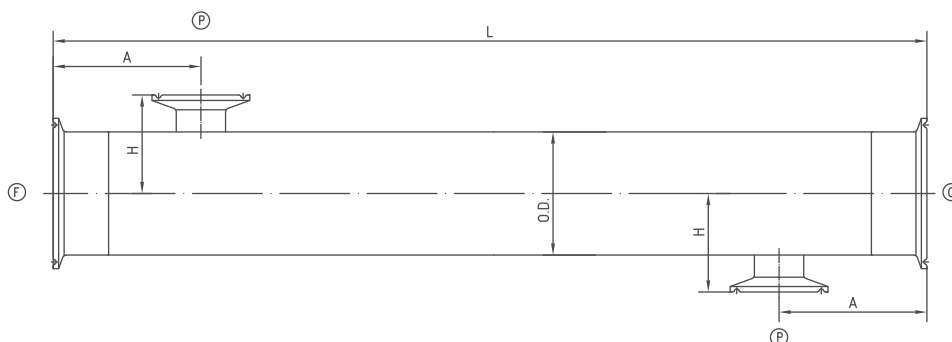
T: (86) 17721058457
F: (8621) 61638527
info@keysino.cn

KEYSINO 凯鑫

MetaSep™
Stainless Steel
Membrane Module
不锈钢膜组
KSS-2.5-750A-5P



- L 总长 = 1651 mm OD 膜组外径 = 63.5 mm A 管口定位 = 76.2 mm H 外伸 = 50.8 mm
F C 料液进口/出口: 2.5" P 滤液出口: 1"



最大工作压力:	10.3 bar	管程数:	1
工作温度:	0 - 149 °C *1	管口连接方式:	卡箍接头+卡箍垫圈+卡箍 (尺寸见附件)
壳体材质:	316L	管口连接尺寸标准:	ASME-BPE
膜管材质:	316L+TiOx	供货范围:	见图 *2
膜管数量及规格:	No.4 x 3/4 吋	安装方式:	立式/卧式
膜孔径:	0.5/0.1/0.02 μm	表面处理:	机械抛光(亮光)
膜面积:	0.35m ²	PH值范围:	0 - 14

*1: 超过工作温度使用, 需卖方确认。

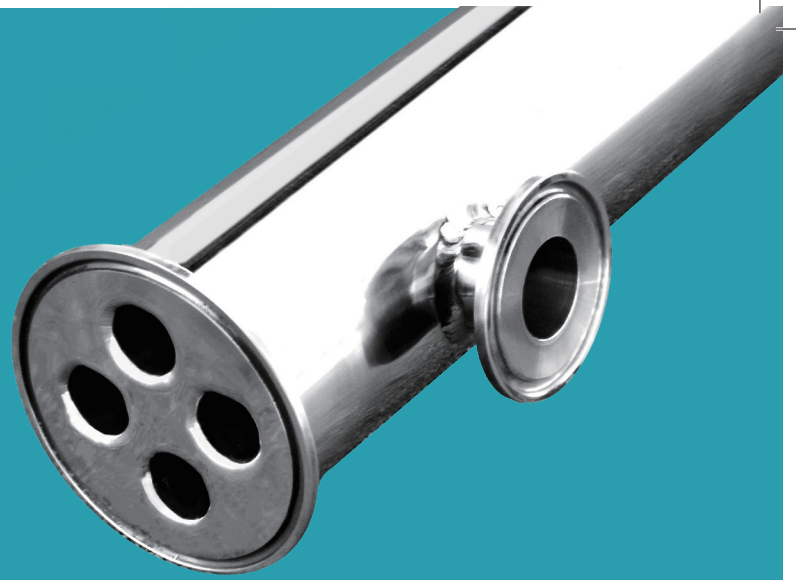
*2: 如有需要, 卖方可提供附件配件。



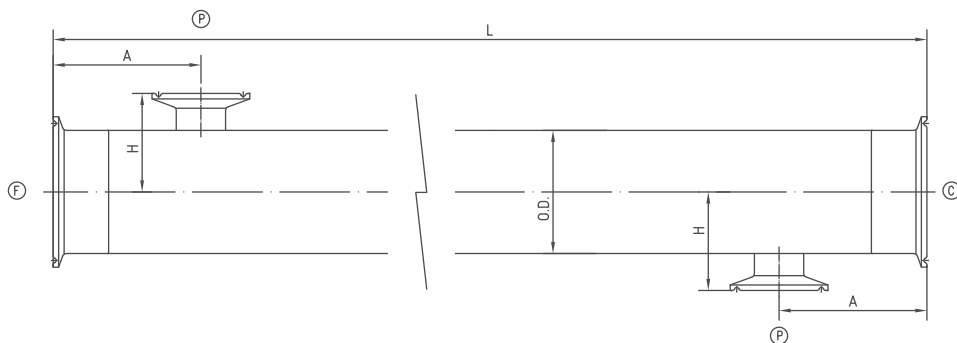
上海市浦东新区新金桥路1888号6幢5层
5F, No.6 Building, 1888 Xinqinqiao Rd. Shanghai 201206, China
www.keysino.cn

T: (86) 17721058457
F: (8621) 61638527
info@keysino.cn

MetaSep™
Stainless Steel
Membrane Module
不锈钢膜组
KSS-2.5-750A-10P



- L Total Length = 125"
- OD O.D. = 2.5"
- A Location = 3"
- H Protrude = 2"
- F C Feed Inlet / Concentration Outlet: 2.5"
- P Permeate Outlet: 1"



Max. Operating Pressure:	10.3 bar	Number of Passes:	1
Operating Temperature:	0 to 149 °C *1	Nozzle Connection Type:	Clamp Ferrule + Ferrule Gasket + Tri-clamp (Ref Att)
Housing Material:	316L	Nozzle Connection Standard:	ASME-BPE
Membrane Material:	316L + TiOx	Supply Scope:	Ref. Scketch *2
Membrane Number x Diameter:	No.4 x 3/4 inch	Installation:	Vertical /Horizontal
Membrane Pore Size:	0.5/0.1/0.02µm	Surface Treatment:	Mechanical Polishing (Polished)
Membranbe Area:	0.7m ²	Ph Value of Operating Range:	0 - 14

*1: Contact with manufactor for higher temperature application.

*2: Contact with manufactor for assesory availability.

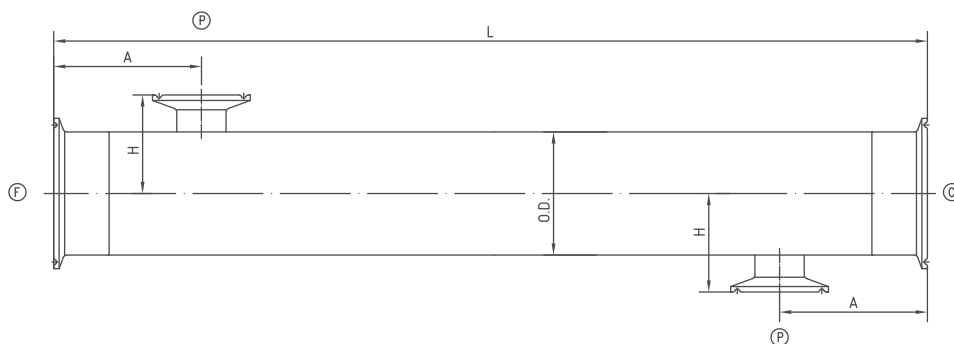


KEYSINO 凯鑫

MetaSep™
Stainless Steel
Membrane Module
不锈钢膜组
KSS-2.5-750A-5P



- L Total Length = 65"
- OD O.D. = 2.5"
- A Location = 3"
- H Protrude = 2"
- F C Feed Inlet / Concentration Outlet: 2.5"
- P Permeate Outlet: 1"



Max. Operating Pressure:	10.3 bar	Number of Passes:	1
Operating Temperature:	0 - 149 °C *1	Nozzle Connection Type:	Clamp Ferrule + Ferrule Gasket + Tri-clamp (Ref Att)
Housing Material:	316L	Nozzle Connection Standard:	ASME-BPE
Membrane Material:	316L + TiOx	Supply Scope:	Ref. Scketch *2
Membrane Number x Diameter:	No.4 x 3/4 inch	Installation:	Vertical /Horizontal
Membrane Pore Size:	0.5/0.1/0.02µm	Surface Treatment:	Mechanical Polishing (Polished)
Membranbe Area:	0.35m ²	Ph Value of Operating Range:	0 - 14

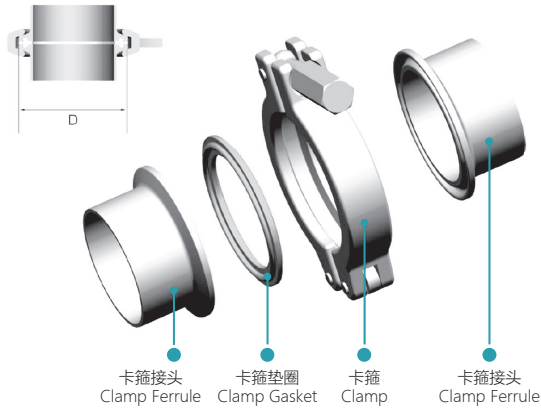
*1: Contact with manufactor for higher temperature application.

*2: Contact with manufactor for assesory availability.



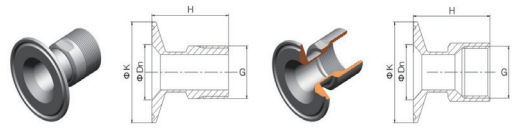
上海市浦东新区新金桥路1888号6幢5层
5F, No.6 Building, 1888 Xinqinjqiao Rd. Shanghai 201206, China
www.keysino.cn

T: (86) 17721058457
F: (8621) 61638527
info@keysino.cn



卡箍接头 Clamp Ferrule
卡箍垫圈 Clamp Gasket
卡箍 Clamp
卡箍接头 Clamp Ferrule

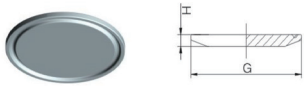
内外螺纹卡箍 Female/Male Thread Clamp



SIF22:J52ZE Dn K H G (BSP/BSPT/NPT)

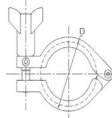
0.5"×0.5"	9.4	25.0	50.7	1/2"
0.75"×0.5"	15.7	25.0	50.7	1/2"
0.75"×0.75"	15.7	25.0	50.7	3/4"
1"×0.5"	22.1	50.5	50.7	1/2"
1"×0.75"	22.1	50.5	50.7	3/4"
1"×1"	22.1	50.5	54.7	1"
1.25"×0.75"	28.8	50.5	50.7	3/4"
1.25"×1"	28.8	50.5	54.7	1"
1.25"×1.25"	28.8	50.5	56.7	1 1/4"
1.5"×0.75"	34.8	50.5	50.7	3/4"
1.5"×1"	34.8	50.5	54.7	1"
1.5"×1.25"	34.8	50.5	56.7	1 1/4"
1.5"×1.5"	34.8	50.5	56.7	1 1/2"
2"×1"	47.5	64.0	54.7	1"
2"×1.25"	47.5	64.0	56.7	1 1/4"
2"×1.5"	47.5	64.0	56.7	1 1/2"
2"×2"	47.5	64.0	58.7	2"
2.5"×1"	60.2	77.5	54.7	1"
2.5"×1.5"	60.2	77.5	56.7	1 1/2"
2.5"×2"	60.2	77.5	58.7	2"
2.5"×2.5"	60.2	77.5	67.7	2 1/2"
3"×1"	72.9	91.0	54.7	1"
3"×1.5"	72.9	91.0	56.7	1 1/2"
3"×2"	72.9	91.0	58.7	2"
3"×2.5"	72.9	91.0	67.7	2 1/2"
3"×3"	72.9	91.0	67.7	3"
4"×4"	97.4	119.0	75.8	4"

卡箍堵头 Clamp Blind Plate



SIZE	G	H
17.2	—	34.0
—	—	34.0
—	—	34.0
21.3	—	50.5
26.9	—	50.5
33.7	1"	50.5
—	1.25"	50.5
—	1.5"	50.5
42.4	2"	64.0
45.0	—	64.0
48.3	—	64.0
57.0	—	77.5
60.3	2.5"	77.5
76.1	3"	91.0
88.9	—	106.0
108.0	4"	119.0
114.3	—	130.0
133.0	—	145.0
139.7	—	155.0
—	6"	167.0
159.0	—	183.0
168.3	—	217.7
219.1	—	233.5
—	—	268.0
—	—	319.0

卡箍 Clamp

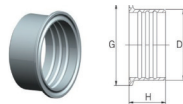


SIZE 卡箍接头

1"-1.5"	50.5
2"	64.0
2.5"	77.5
3"	91.0
3.5"	106.0
4"	119.0
4.5"	130.0
5"	145.0
5.5"	155.0
6"	166.7
6.5"	183.0
8"	217.0
8.5"	240.0
10"	268.0
12"	319.0

膨胀式卡箍接头

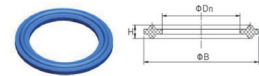
Expanded Clamp Ferrule



SIZE	G	H	D
1"	50.5	19.1	29.5
1.5"	50.5	28.6	42.5
2"	64.0	33.3	55.7
2.5"	77.5	34.9	68.8
3"	91.0	36.5	82.0
4"	119.0	38.1	108.0

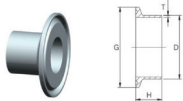
卡箍垫圈

Clamp Gasket



SIZE	卡箍接头B
1"	50.5
1.25"	50.5
1.5"	50.5
2"	64.0
2.5"	77.5
3"	91.0
4"	119.0
6"	167.0

卡箍接头 Clamp Ferrule



SIZE	OD	D1	H(A)	H(B)	H(C)	Thickness
1"	25.4	50.5	12.7	21.5	28.6	1.2 1.5 1.65
2.5"	63.5	77.5	12.7	21.5	28.6	- 1.5 1.65

注: 其余尺寸单位 mm. / Note: default unit is mm.



上海市浦东新区新金桥路1888号6幢5层
5F, No.6 Building, 1888 Xinqinqiao Rd. Shanghai 201206, China
www.keysino.cn

T: (86) 17721058457
F: (8621) 61638527
info@keysino.cn